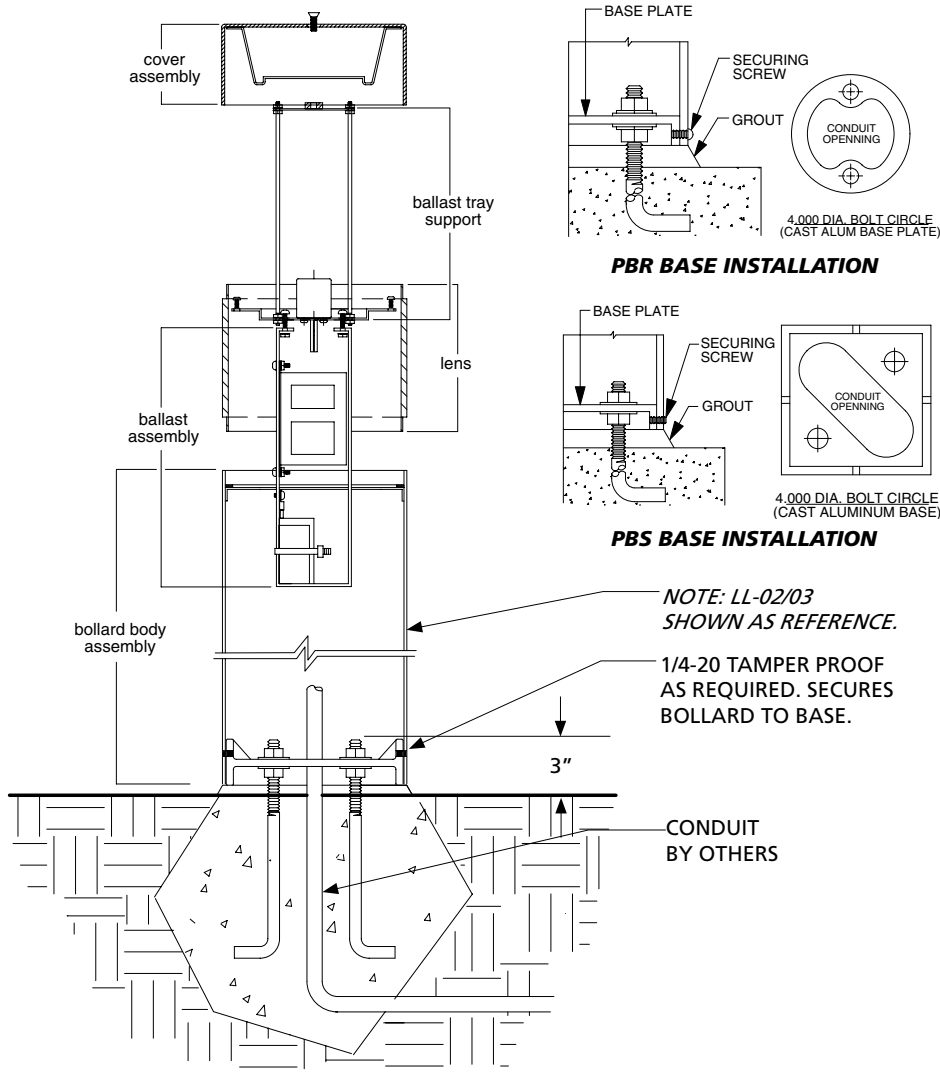
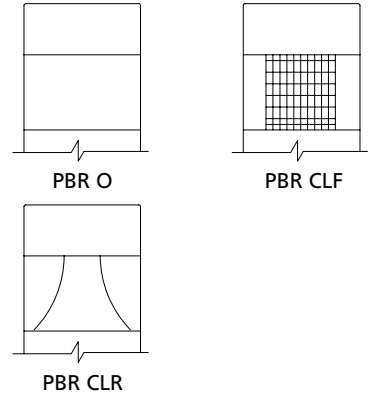


INSTALLATION SHEET

Safety, Warnings and Suggestions

- ¹ Care should be taken not to position fixtures in locations where bare skin can come into contact with the potentially high temperatures on the lens.
- ² **Avoid** installing fixtures in locations where water collects and stands for prolonged periods.
- ³ **Make** sure that electrical power is disconnected before any work is performed.
- ⁴ **All** gaskets and sealing surfaces must be kept clean during installation.
- ⁵ **All** wiring and installation should meet local, state and national electrical codes.
- ⁶ **Install** correct lamp type and wattage.



1. Prepare the site with adequate excavation and install the anchor bolts as per factory supplied template.

2. Remove the bollard from base by removing securing screws. Install the base to anchor bolts and level.

3. Connect supply wire to fixture wires, white to white, black to black and green to ground.

4. Take the bollard body assembly and install over the cast base and secure the body with the 1/4-20 tamper proof screws.

5. Remove the bollard top flat head screw and cap, install proper type and wattage lamp and replace bollard cap and tighten screw securely.

6. To service ballast, take off bollard cap and lens. Remove ballast/reflector assembly (wiring includes quick disconnect) and replace parts as necessary. Reassemble in the opposite order. NOTE: MAKE SURE BEFORE INSTALLING THE LENS, THAT THE GASKET IS PROPERLY SEATED.